

Download File PDF Flower And Seed Dissection Lab Answer Key

#Jenny



Finally I get this ebook, thanks for all these I can get now!

#Rio



Cool! I'am really happy

#Markus Jensen



I did not think that this would work, my best friend showed me this website, and it does! I get my most wanted eBook

#Hun Tsu



wtf this great ebook for free?!

#Che Salsa



My friends are so mad that they do not know how I have all the high quality ebook which they do not!

#Diego Butler



so many fake sites. this is the first one which worked! Many thanks

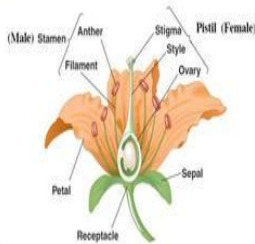
Name: _____ Date: _____ Period: _____

Flower Dissection Lab Activity

Background Information:
Every flower consists of a set of adaptations that help to ensure successful reproduction. For example, flowers often have bright colors, attractive shapes, and pleasing aromas. These traits help them attract insects and other animals that will carry pollen grains from flower to flower. Pollination also occurs by means other than animals carrying the pollen. For some flowering plants, the wind plays an important role in transferring pollen from plant to plant.

The seed-bearing plants that produce flowers are **angiosperms**. The flowers produce the seeds, each of which contains a new plant embryo. The parts of the flower are usually found in whorls, or rings. **Petals** are one of the sets of whorls. They attract pollinators. **Sepals** lie outside the petals. They protect the bud.

The reproductive organs, the stamens and pistils, lie inside the petals. A **stamen** is a male reproductive part. It consists of an anther that is held up by a filament. The anther produces pollen grains. A **pistil** is a female reproductive part. Its top is called the **stigma**. It is sticky to ensure that when pollen grains land on it, they stick to it. The middle supporting structure is the **style**, and the large base is the **ovary**, where the eggs are produced.



Materials:

[Download PDF version of :](#)
Flower And Seed Dissection Lab Answer Key